

# Head Lice (Pediculosis Capitis)



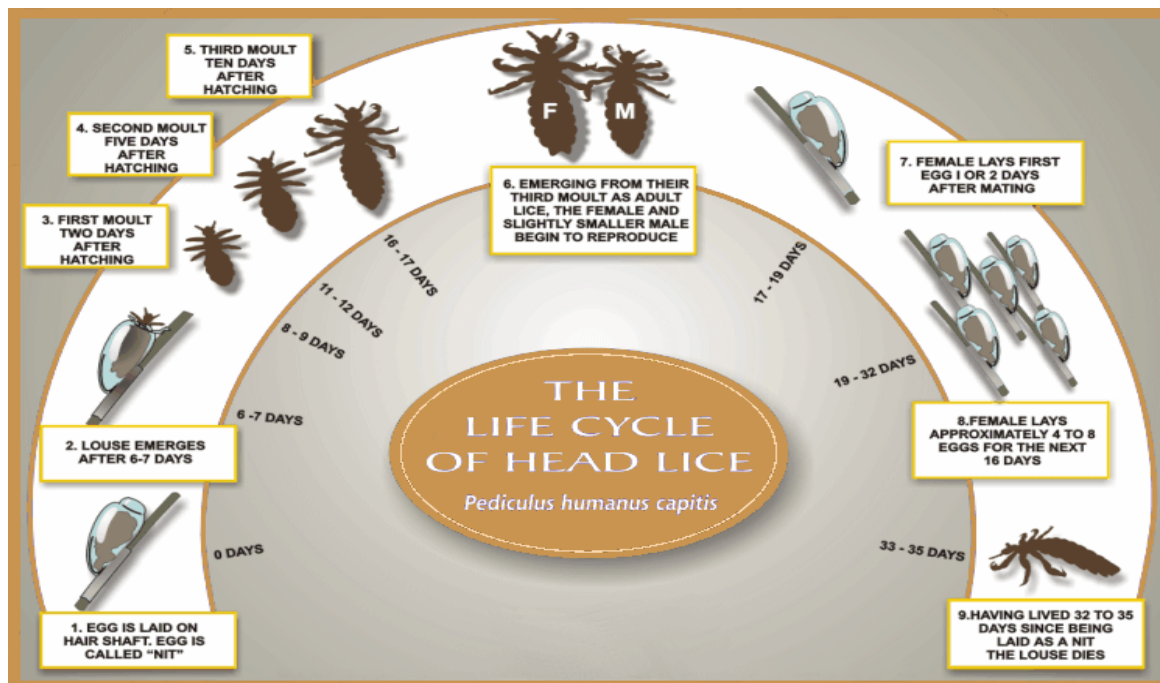
hair shaft

Symptoms: Eggs (nits) are most often seen as small bumps on the hair shaft near the scalp. Adult lice are tiny, dark gray, and difficult to see because they move rapidly through the hair. After infestation occurs, itching is common.

Incubation: Adult lice crawl and can be transferred from person to person or clothing-to-clothing. Eggs are "glued" to the hair shaft near the head. Ordinary shampooing or brushing will not remove. After 7 - 10 days, nits hatch and if untreated, will mature and lay more eggs.

Prevention of Complications: Do not share combs, brushes, hats, etc. Treatment is necessary to prevent spread to family and friends. In addition to direct treatment of hair, linens and other household articles must be treated. It is important to follow direction for use of shampoos. After treatment, check head daily for about 2 weeks for signs of re-infestation.

School Control: Child is excluded from school until nit-free.





[Headhuntersliceremovalservic.com](http://Headhuntersliceremovalservic.com)



[licetreatmentstore.com](http://licetreatmentstore.com)



[headliceremediestic.com](http://headliceremediestic.com)